

# INDUSTRIAL AND MANUFACTURING PLANNING AND DESIGN



# WIDSETH

ARCHITECTS ■ ENGINEERS  
SCIENTISTS ■ SURVEYORS

Widseth.com





Packing and Processing — Alexandria, MN



Cold Storage Facility — Rochester, MN



Production Facility — Owatonna, MN

## INDUSTRIAL AND MANUFACTURING FACILITIES

Our architects and engineers plan and design manufacturing and industrial buildings for a range of clients and their processes. Each client's site and facility needs are unique, and our team zeros in on meeting those needs, including:

- Facility Assessments
- Master Planning
- Mechanical and Electrical Upgrades
- Structural Enhancements
- Environmental Assessments
- Site Improvements
- Security
- Renovation, Additions, and New Construction

## DESIGN PROCESS

**1 | Pre-design:** Gather information about client, process, facilities, issues, and goals for the project

*Our design team starts each project by meeting with and listening to you to learn more about your company, mission, goals, processes, and future facility needs.*

*Our team reviews your existing building to calculate square footage, identify adjacencies (e.g., production and delivery), locate office spaces and break areas, track internal circulation patterns, and other elements specific to your industry.*

*The review of your site includes: site orientation, utilities, wetlands, site access, parking, building addition or building placement location, and other features specific to your site and needs.*

*Our architects and engineers use the information they've gathered to develop a preliminary design process, scope of work, schedule, and budget.*



Design Meeting

ARCHITECTS ■ ENGINEERS ■ SCIENTISTS ■ SURVEYORS



# DESIGN PROCESS

## 2 | Schematic Design: Create options for design and materials; review operations flow

*During schematic design we create design alternatives and identify major budget impacts to review with you.*

*We consider internal and external circulation patterns looking for efficiencies. We review your processes (e.g., raw materials in, processing, assembly, finishing, and shipping of products) as well as identify how people move throughout the facility. Our team looks for optimal adjacencies between departments and projected space needs.*



## 3 | Design Development: Refine design and start code reviews

*Once you provide feedback on the schematic design, our designers further refine the plan. Preliminary choices are made such as building materials and mechanical and electrical systems and layout.*

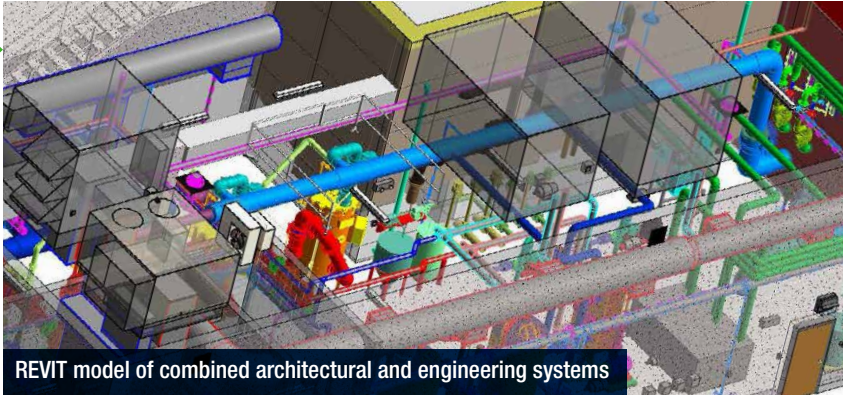
*Our team reviews building and zoning codes with local municipalities and state agencies to confirm the design is in compliance.*

*Finally before moving on to the next design phase, we review the design and budget with you to ensure the project is progressing as you have envisioned.*

## 4 | Construction Documents and Bidding: Coordinate for construction

*Our project team coordinates all disciplines into one set of plans and specifications for construction.*

*The team remains available throughout bidding to answer contractor questions, produce addenda to communicate changes to the documents, help with the bid opening process, and make recommendations for final selection.*



## 5 | Construction Administration: Conduct on-site verification

*During construction our experienced professionals monitor work as it progresses. We are actively engaged in the construction process by creating detailed contracts, answering Requests for information (RFI), reviewing shop drawings, reviewing payment applications, and compiling project punchlists at project closeout.*

Our Planning and Design

# Team

**Industrial and Manufacturing Specialists**



**Mike England AIA**  
Architect

Central Minnesota  
Mike.England@Widseth.com  
218.316.3608



**Greg Bohl AIA, LEED AP**  
Architect

Central Minnesota  
Greg.Bohl@Widseth.com  
320.335.5009



**Brent Dammann AIA**  
Architect

Northern MN/North Dakota  
Brent.Dammann@Widseth.com  
701.765.8005



**Dana Hlebichuk AIA**  
Architect

Southern Minnesota  
Dana.Hlebichuk@Widseth.com  
507.206.2135

## Full Service Designers and Engineers

Our team includes design and engineering professionals from over a dozen disciplines including:

- Architects
- Structural Engineers
- Civil Engineers
- Electrical Engineers
- Mechanical Engineers
- Planners
- Interior Designers
- Landscape Designers
- Funding Specialists
- Surveyors
- Scientists
- Communication Specialists

# 1975

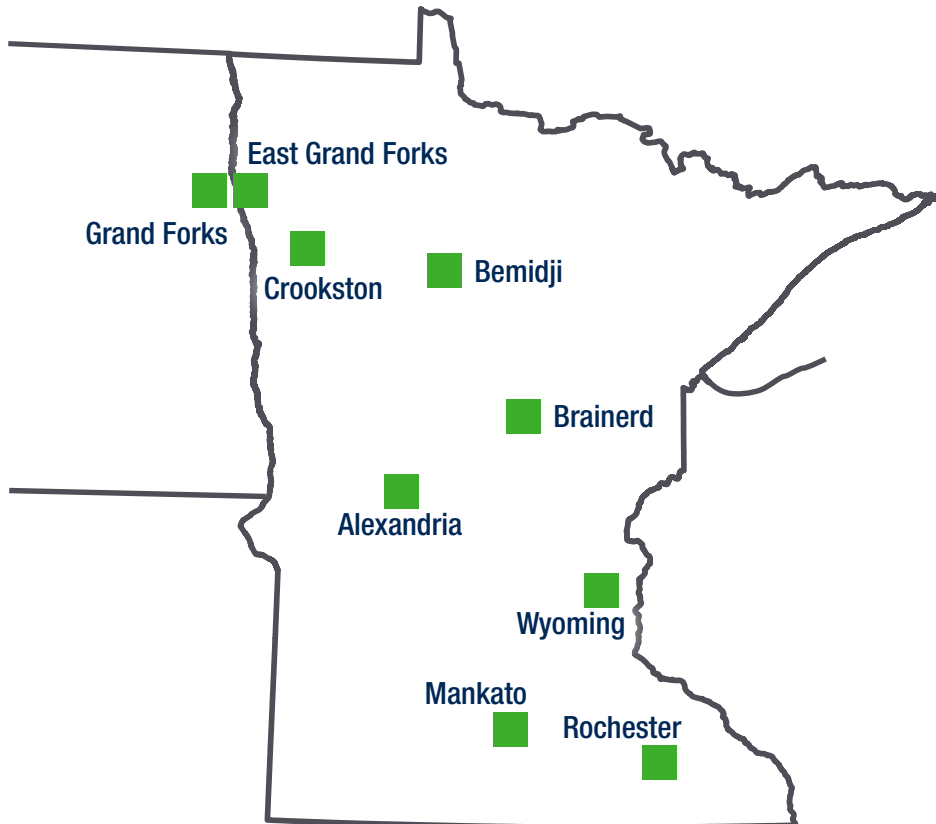
Since 1975, we have developed experience and expertise to tackle all manner of challenges

for our clients. **Widseth designs the structures and systems that sustain our quality of life and keep our communities moving forward.**

# TODAY

AND INTO THE FUTURE

Widseth's offices are located across Minnesota and North Dakota.



# MULTI DISCIPLINE PLANNING & DESIGN

# 200+ EMPLOYEES

# 9 LOCATIONS